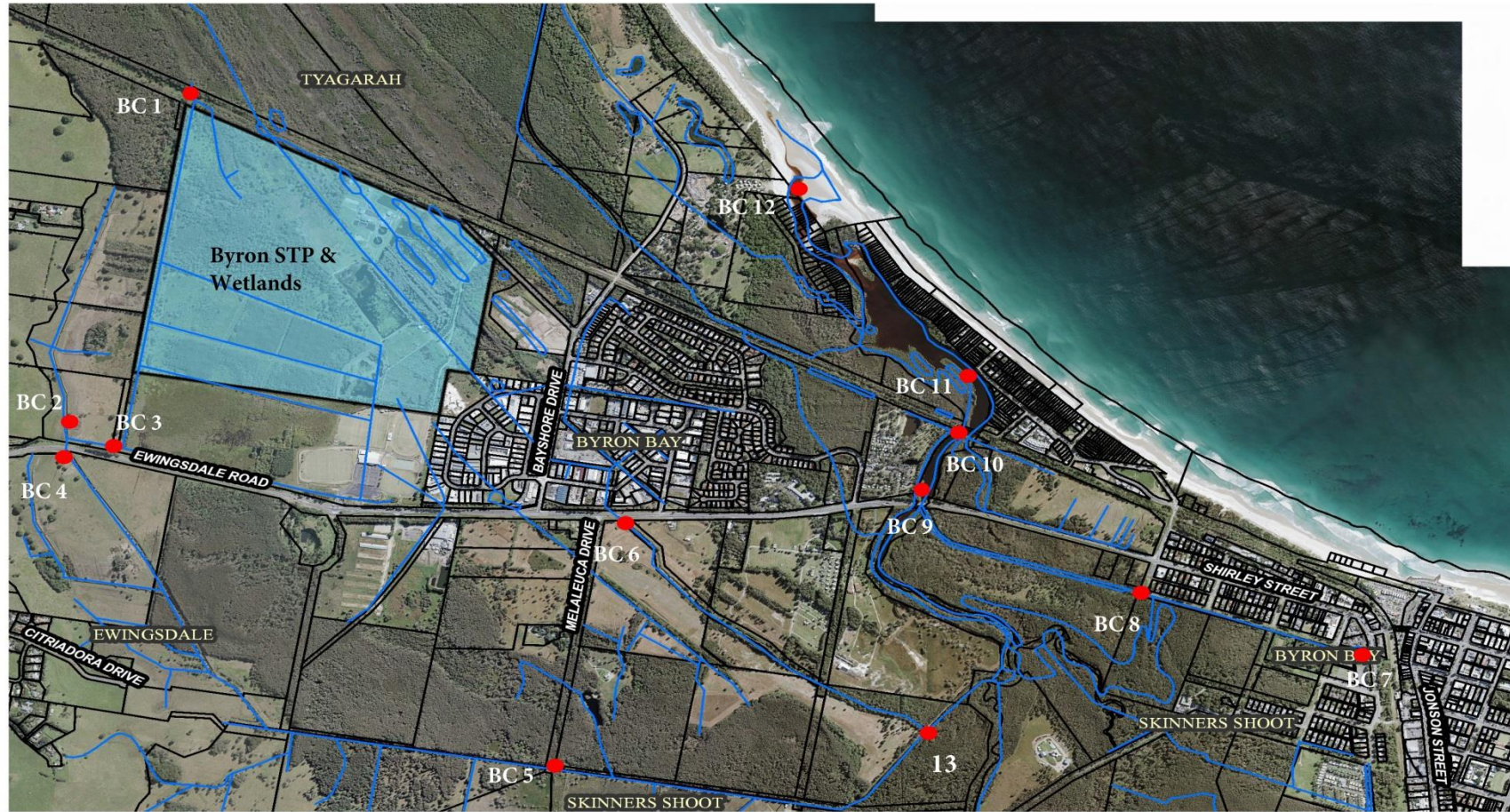


Surface Water Quality Monitoring Points with Belongil Catchment and Tallows Catchment

Site	Description
Belongil Catchment (BC)	
BC 1	Railway Culvert (NE corner of BB STP, top of catchment area)
BC 2	Bottom Moran's Hill Drain (apr.100m upstream from BC 4)
BC 3	Junction of BSTP Wetlands & Cavanbah Centre
BC 4	Upper Union Drain, South of Ewingsdale Culvert
BC 5	Site deleted (Aug 2017) - Landowner denial of access. Union Drain, end of Melaleuca Drive
BC 6	Top end of Belongil Fields drain
BC 7	Butler Street drain – downstream of Butler Str. culvert
BC 8	Butler Street drain, Southern end Kendall Street
BC 9	Ewingsdale Rd, northern side of bridge
BC 10	Belongil Creek railway bridge (Drain runs down southern side of rail line/ outlet at rail bridge)
BC 11	Manfred Street drain outlet, Belongil Creek
BC 12	Belongil Creek Outlet, east of Elements Resort
BC 13	Bottom end of Belongil Fields drain (Union Drain outlet)
BC 14	Clarks Beach stormwater outlet
BC14b	Paterson Street – Cowper St (Upstream Clarkes Beach outlet / Sandhills Scrubland)
BC 15	Bangalow Road, next to Imedicine (southern Side)
BC 16	Golf Course outlet, Bangalow Road
BC 17	Old Bangalow Road
Tallows Catchment (TC)	
TC 18	Tallows Creek at the Bridge
TC 19	Byron At Byron resort (downstream)
TC 20	Suffolk Park Lake outlet (Teak Circuit, Beech Drive)



Water quality monitoring points within Belongil Creek and drainage system



Disclaimer : While all reasonable care has been taken to ensure the information contained on this map is up to date, no warranty is given that the information contained on this map is free from error or omission. Any reliance placed on such information shall be at the sole risk of the user. Please verify the accuracy of the information prior to using it. Note : The information shown on this map is a copyright of the Byron Shire Council and the NSW Department of Lands.

1,521

Meters

(Scale @ A4 Size)



NORTH

1 : 22,200

28-Apr-2016

Notes



Byron Bay Stormwater Sampling Points



1,193

Meters (Scale @ A4 Size)

Disclaimer : While all reasonable care has been taken to ensure the information contained on this map is up to date, no warranty is given that the information contained on this map is free from error or omission. Any reliance placed on such information shall be at the sole risk of the user. Please verify the accuracy of the information prior to using it. Note : The information shown on this map is a copyright of the Byron Shire Council and the NSW Department of Lands



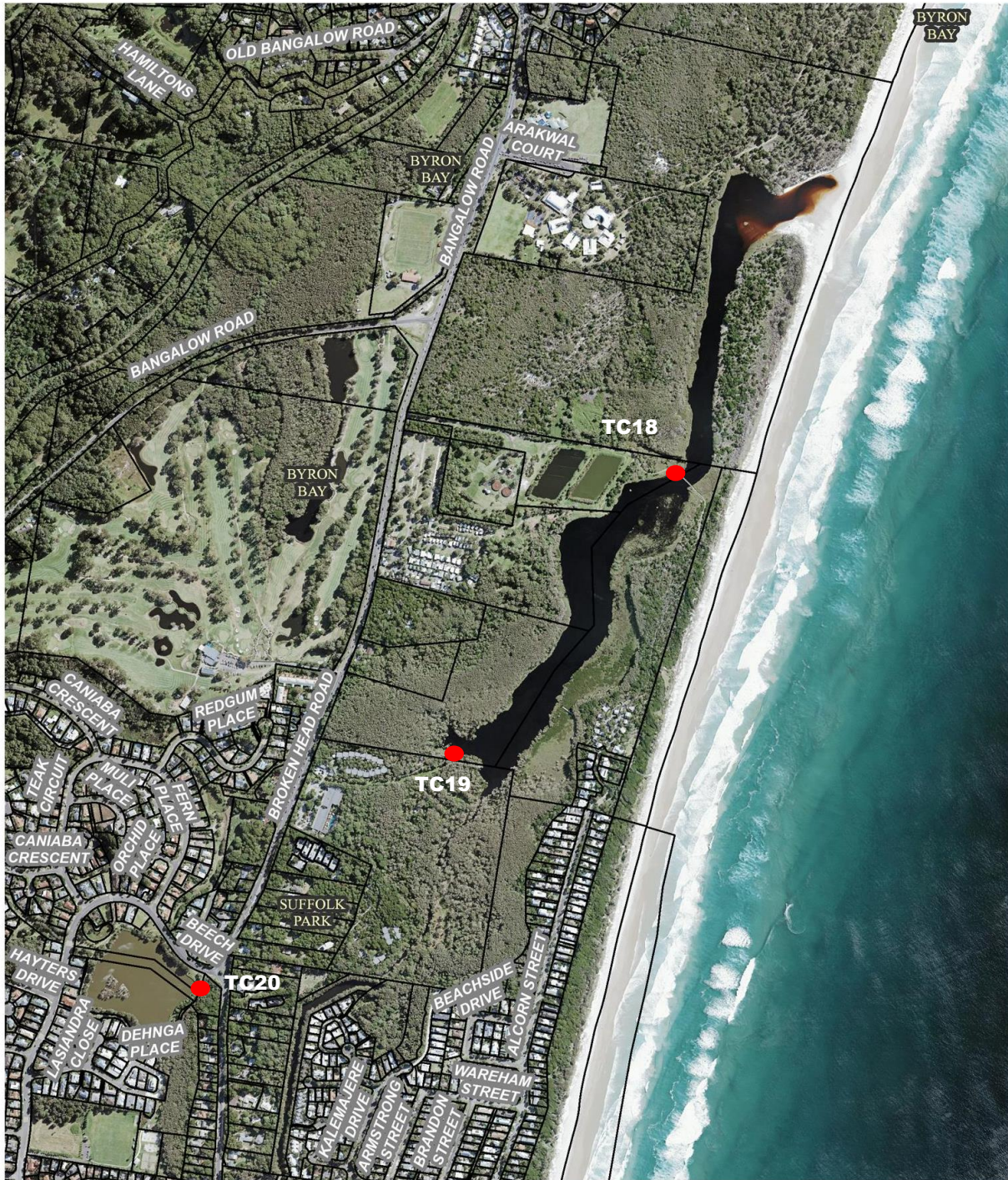
1 : 17,406

Notes

06-Jun-2016



Water quality monitoring points within Tallows Catchment



762

Meters (Scale @ A4 Size)

Disclaimer : While all reasonable care has been taken to ensure the information contained on this map is up to date, no warranty is given that the information contained on this map is free from error or omission. Any reliance placed on such information shall be at the sole risk of the user. Please verify the accuracy of the information prior to using it. Note - The information shown on this map is a copyright of the Byron Shire Council and the NSW Department of Lands.



1 : 11,122

Notes

21-Aug-2017